

SECTION CORNER COMMON TO SECTIONS 33 AND 34 TOWNSHIP 4 NORTH, RANGE 6 WEST AND SECTIONS 3 AND 4, TOWNSHIP 3 NORTH, RANGE 6 WEST, WILLAMETTE MERIDIAN.

HISTORY:

Record No. 1 September, 1892 - John McQuinn, GLO Deputy Surveyor, in survey of the Township line between 3 & 4 North, Range 6 West; Set a post for the corner, from which:

- A 20" Hemlock bears N70°E, 63 links (41.58');
- A 14" Hemlock bears S30°E, 39 links (25.74');
- An 18" Hemlock bears S85°W, 78 links (51.48');
- A 12" Hemlock bears N30°W, 84 links (55.44');

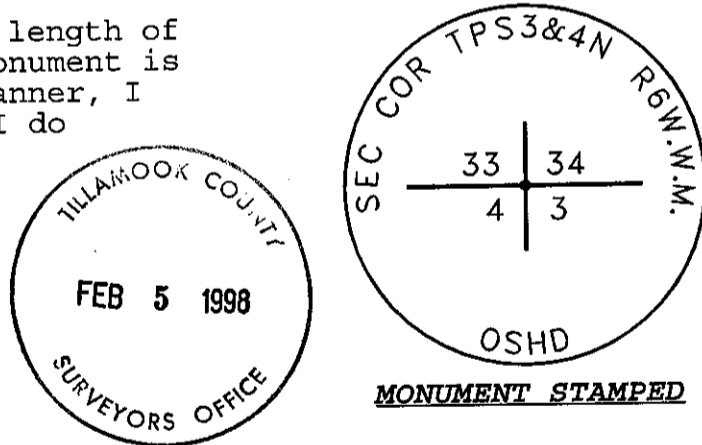
Record No. 2 January 20, 1943 - A.V. Benedict, Oregon Engineer No. 1960; "Continuing Westerly by traverse between sections 34 and 3, we found 2 dead bearing trees, properly scribed, and the stump of a third, for the corner to sections 33-34-3-4. At a point 2678.8 ft. N89°25'W from the quarter corner between sections 34 and 3, we place a concrete pedestal 12" square at top, 18" square at bottom and 36" high, set 30 inches in the ground, with a 2-1/2" brass disc on which is stamped a cross and the numbers 33-34-4-3 and, circumferentially, SEC. COR. TPS. 3&4 N. R. 6 W.W.M. O.S.H.D. We also set a 4" X 4" white guard post stenciled SEC. COR. on 2 faces and O.S.H. PROP. COR. on other 2 faces in black. No live trees available for bearing trees. (Bearing Tree Book page 256-5, Clatsop County Survey Records. See also Book 1, pages 18 and 176, Tillamook County Survey Records.)

Record No. 3 March 10, 1949 - W.S. Phelps, Oregon Board of Forestry timber cruiser; "No BT's ... Cor consists of a brass cap in concrete (12" diam. X 6" high) also 4X4" white post. Cor reset by highway Dept. Cor. is located 10 chains E of County line sign, 20' E of a log road approx. 4 chains N of junction with Hwy." (Oregon State Forestry Department corner card No. 101, Clatsop County Survey Records.)

EVIDENCE-MONUMENTATION:

On January 22, 1998 we found the monument as described in Record No. 2. with 2 exceptions: The brass cap measures 2-3/4" in Diameter and the concrete pedestal is beveled on the outside edges and is now flush with the ground surface. Said monument is stamped as shown herein:

We did not measure the base or length of said monument. Because this monument is constructed in such a secure manner, I do not remonument it, however I do rewitness it as follows:



FROM WHICH:

Set a 6 foot white Carsonite witness post 2 feet North.

Found a 4" X 4" cedar post, top beveled to a point, bears 1.3 feet Southwesterly, top 2' above. Said post is painted "SEC. COR." in stenciled white painted lettering on the South West side of post, all remaining marks are illegible due to fungus and mold on the post.

GLO bearing trees are as follows:

- The 20" Hemlock N70°E, 41.58'; Now a rotten mound, no marks found.
- The 14" Hemlock S30°E, 25.74'; Now a rotten mound, no marks found.
- The 18" Hemlock S85°W, 51.48'; No remains found.
- The 12" Hemlock N30°W, 55.44'; Now falls in "Music Road" log road.

Set 4 new witnesses as follows:

A 29" Fir bears N67°48' "E, a distance of 117.01 feet to a 3/4" brass disc stamped "LS2014" nailed to a blazed face scribed "T4NR6WS34BT".

A 24" Hemlock bears S61°43'12"E, a distance of 151.69 feet to a 3/4" brass disc stamped "LS2014" nailed to a blazed face scribed "T3NR6WS3BT".

A 15" Hemlock bears S31°15'24"W, a distance of 63.08 feet to a 3/4" brass disc stamped "LS2014" nailed to a blazed face scribed "T3NR6WS4BT".

A 17" Hemlock bears N29°28'12"W, a distance of 119.55 feet to a 3/4" brass disc stamped "LS2014" nailed to a blazed face scribed "T4NR6WS33BT".

Nailed 4" X 7" yellow aluminum "BEARING TREE" signs on the 4 new witnesses.

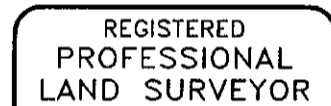
The corner lies about ± 28' Southerly from the centerline of Music Road logging road, A small creek, course South, bears ± 20' Northeasterly where it passes under the road.

Bearings based on solar observation taken on January 22, 1998 at Latitude 45°46'48" North, Longitude 123°25'21" West.

Present: Steven D. Thornton, PLS 2014, Clatsop County Surveyor.
Barbara B. Cooper, PLS 2818, County Survey Technician.
Jerry Carter, County Survey Technician.

County Surveyor Field Book 39, page 1, Clatsop County Survey Records.

Surveyed for Clatsop County
by: Steven D. Thornton, PLS 2014
Clatsop County Surveyor
1100 Olney Avenue
Astoria, Oregon. 97103



Steven D. Thornton



RENEWAL DATE: JULY 1, 1998